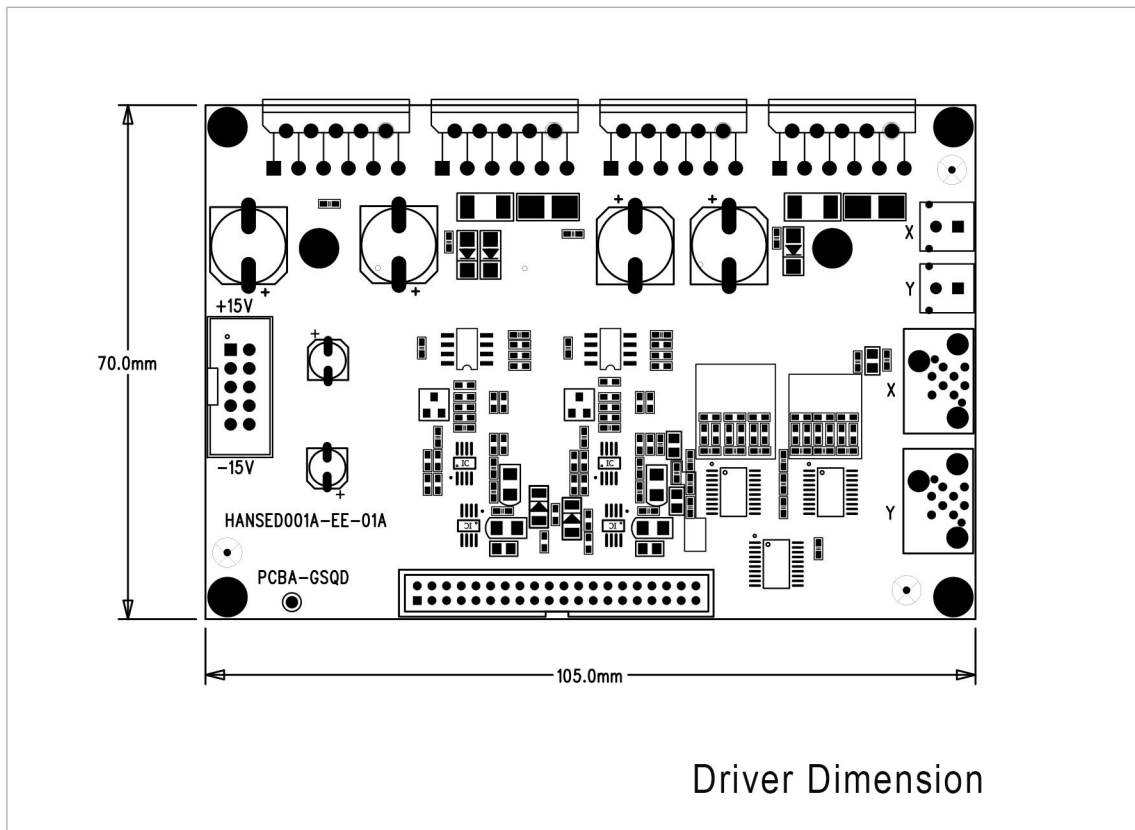


ExtraGalvo Driver

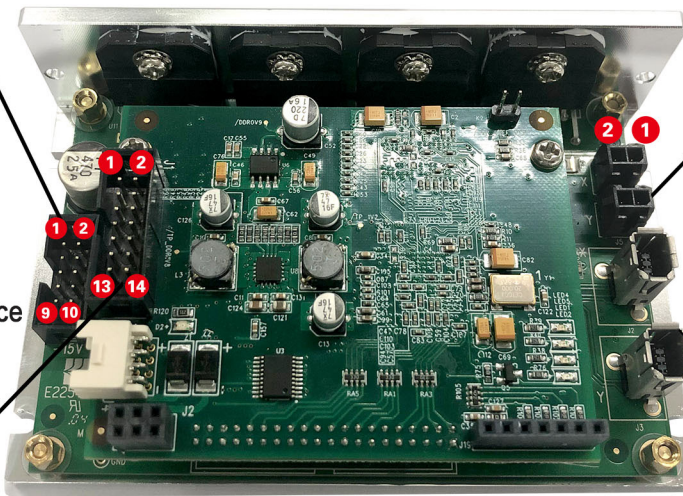


J1: Power Interface

Pin2、3、4:+15VIN
Pin8、9、10: -15VIN
Pin5、6、7: GND

J1: Marking Signal Interface

Pin1:CLK-
Pin2: CLK+
Pin3:SYNC-
Pin4:SYNC+
Pin5:XCHANNEL-
Pin6:XCHANNEL+
Pin7:YCHANNEL-
Pin8:YCHANNEL+
Pin9、11、13:FB(1-3)-
Pin10、12、14:FB(1-3)+



J5: Galvo Power Interface

Pin1:MOTOR1(+)
Pin2: MOTOR1(-)

J3: Galvo Signal Feedback Interface

Pin1: GND
Pin2: +5V
Pin3:M1_ENC_COS(+)
Pin4:M1_ENC_COS(-)
Pin5: M1_POS(-)/ENC_Z(-)
Pin6:M1_POS(+)/ENC_Z(+)
Pin7:M1_ENC_SIN(+)
Pin8:M1_ENC_SIN(-)
Pin11、12、13:CHGND1

深圳市大族思特科技有限公司
Shenzhen Han's Scanner S&T Co.,Ltd.

+86-(0)755-23041055

www.hansscanner.com

hansscanner@hanslaser.com

深圳市宝安区福永镇重庆路128号大族激光4栋4楼

4F, Building 4, Han's Laser Production Base, No. 128, Chongqing Road,
Fuyong Street, Baoan District, Shenzhen City, Guangdong, P.R. China.



HAN'S SCANNER

大族思特

